

93

02.03.2017

Barry and
Patricia Durman

From: Pat&Barry <bazpat@bigpond.com>
Sent: Wednesday, 1 March 2017 5:58 PM
To: DPE CSE Information Planning Mailbox
Subject: Review of State Environmental Planning Policy 44
Attachments: barry stepp 44 map.pub; map sepp44.jpg

Hi a hard copy to be posted Please acknowledge receipt of this email and that you can open it Thank you
Barry Durman

Wedderburn NSW

This email has been scanned by BullGuard antivirus protection.
For more info visit www.bullguard.com

Page 3

The only sure way of protecting the Campbelltown Koala Population is to turn the Georges River Corridor into a National Park, buy back land sold by Landcom to the Mir Group at Kellerman Drive and ensure that wildlife corridors between the Georges and Nepean Rivers are protected.

New routes need to be put in place for the High Speed Train as the present Plan runs along the Georges River on Holsworthy Military Reserve Land the track would stop the movement of Koalas between the Georges River and the Military Reserve. (Federal Government)

The Georges River Parkway should be eliminated as we understand State Government has now discounted this proposal in favour of bringing vehicles into the district via the Hume Highway. The Parkway proposal would cut the Georges River Corridor in half along the river and more than likely devastate the Koala population.

Road fatalities are a continuing problem and WIRES has reported that at least 6 Koalas have been killed on Campbelltown roads in the two months leading up to Christmas, signs are not enough to eliminate these deaths safe road crossings and slower speed limits should be put in place.

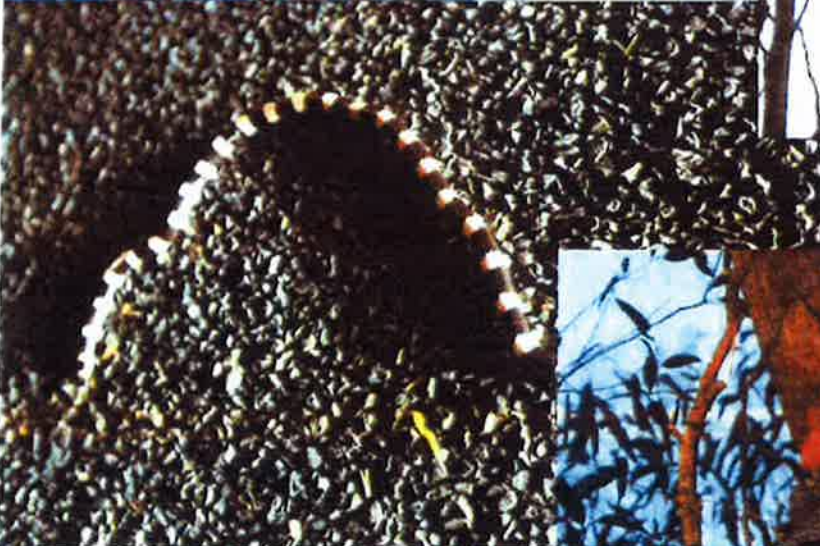
Thank you for allowing me to comment on the NSW Koala Strategy

Yours faithfully

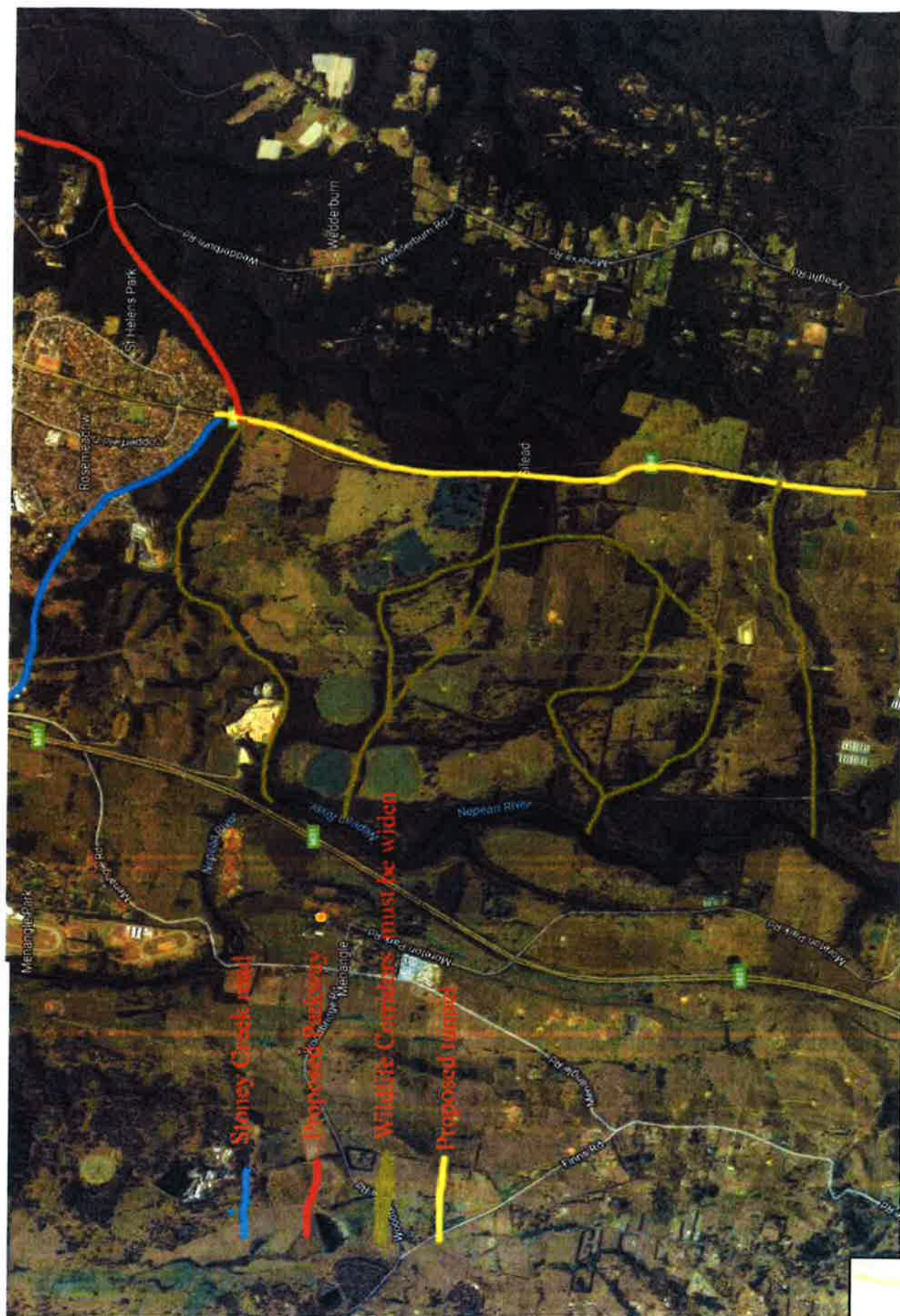
P. Durman

Patricia Durman

bazpat@bigpond.com



THIS IS CAMPBELLTOWN



Map of new, Proposed and Links that would help Koalas and wildlife from being killed



